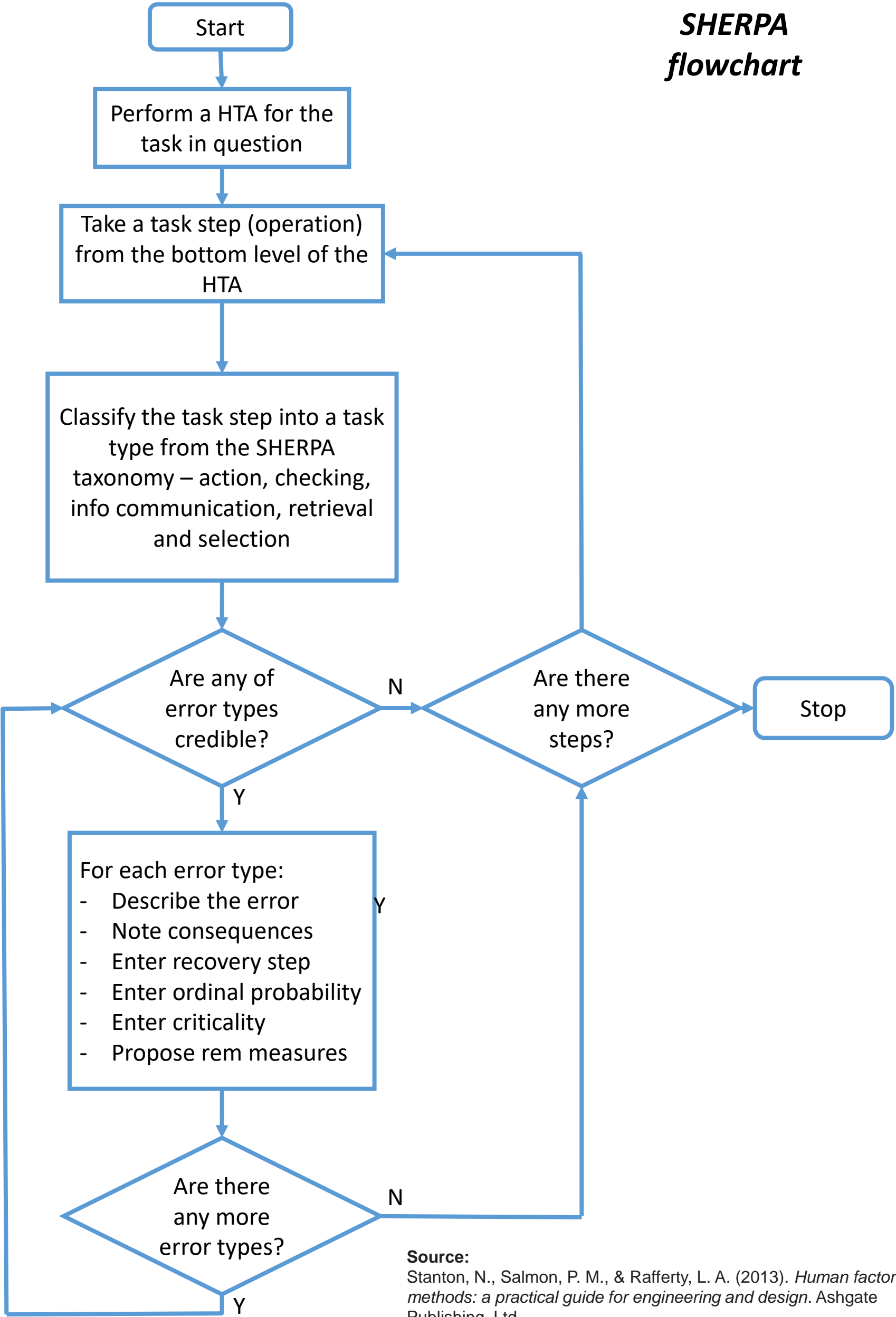


SHERPA
flowchart



Source:
Stanton, N., Salmon, P. M., & Rafferty, L. A. (2013). *Human factors methods: a practical guide for engineering and design*. Ashgate Publishing, Ltd..

Excercise 2 – Systematic Human Error Reduction and Prediction Approach

Apply the SHERPA method to the HTA of the previous exercise. Use the error mode taxonomy (back of the page) and the examples provided to help you doing the exercise.

Fill the table below.

[illegible]

Error Mode Taxonomy

Action Errors

- A1 – Operation too long/short
- A2 – Operation mistimed
- A3 – Operation in wrong direction
- A4 – Operation too little/much
- A5 – Misalign
- A6 – Right operation on wrong object
- A7 – Wrong operation on right object
- A8 – Operation omitted
- A9 – Operation incomplete
- A10 – Wrong operation on wrong object

Checking Errors

- C1 – Check omitted
- C2 – Check incomplete
- C3 – Right check on wrong object
- C4 – Wrong check on right object
- C5 – Check mistimed
- C6 – Wrong check on wrong object

Retrieval Errors

- R1 – Information not obtained
- R2 – Wrong information obtained
- R3 – Information retrieval incomplete

Communication Errors

- I1 – Information not communicated
- I2 – Wrong information communicated
- I3 – Information communication

Selection Errors

- S1 – Selection omitted
- S2 – Wrong selection made